

Piston vibrators

External weight

- Pneumatic
- Explosion-proof
- Oil-free compressed air

The extremely robust series of vibrators with external weight offers particular advantages with respect to the vibrators with internal piston from the LK-, LM and LG-series.

The piston, which is linearly set in motion by means of compressed air, can be made heavier by the addition of weights. This automatically produces different frequencies, amplitudes and driving powers. Due to optimal material selection and special surface treatment of the working surfaces, frictional resistance is reduced, which makes extra lubrication unnecessary. Furthermore, the low frictional resistance means minimal heat production and low air consumption, which contribute towards a high output.

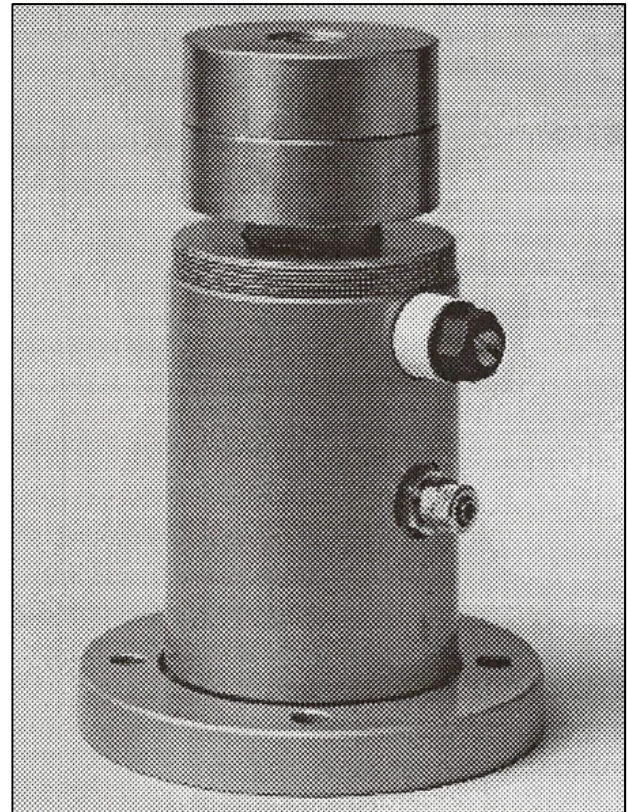
The low air consumption and absence of metallic contact between the piston and end covers also results in minimal noise-production.

Vibrators with external weight are often applied when a large amplitude and low frequency are required, such as for the vibration of filtering units.

As for the light-, medium- and heavy-duty linear vibrators, frequency and amplitude can be independently regulated.

The vibrator stops immediately when the supply of compressed air is closed off.

Note: Both the piston and housing can be mounted on the object to be set in motion. Several external weights can be added to the piston.



APPLICATION:

The piston vibrator with external weight can be employed in open and enclosed spaces and is also suitable for outdoor applications.

It is often used in environmental engineering and for cleaning filter elements.

By means of vibrating plates or trough conveyors, the vibrator can also be used for compacting.

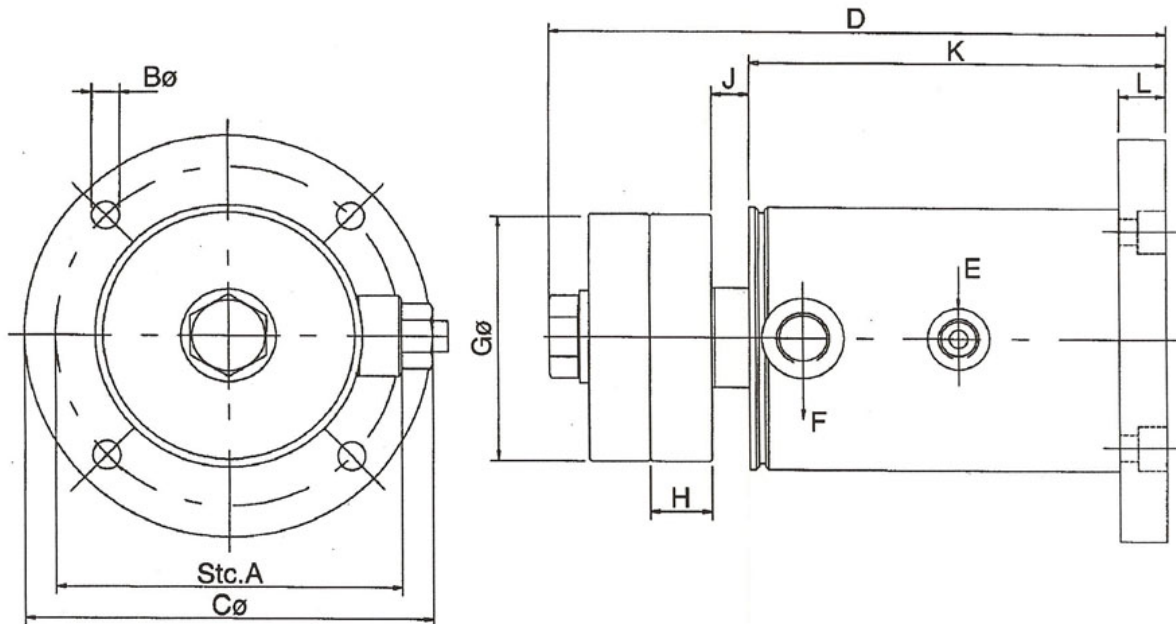
TYPE	Air consumption L/min.		Frequency		Force	
	3 bar	6 bar	3 bar	6 bar	3 bar	6 bar
LE14	30	80	2000	3100	60	120
LE26	60	190	1600	2400	150	450
LE40	150	380	1600	2400	280	800
LE70	180	520	1600	2400	800	1500
LE100	270	760	1600	2600	1800	2600

Technical data measured at 6 bar

1 Bar = 100 Kpa = 10 N/cm²

(the above data and types are not binding)

Piston vibrators with external weight

TYPE	A	B	C	D	E	F	G	H	J	K	L
LE14	65	9	80	164	1/8"	1/4"	40	16	2	104	15
LE26	90	9	110	195	1/4"	1/4"	60	20	5	140	15
LE40	110	9	130	195	1/4"	3/8"	80	20	12	133	15
LE70	155	11	180	195	1/4"	3/8"	120	20	12	133	15
LE100	205	14	230	205	3/8"	1/2"	170	20	15	140	20

1 Bar = 100 KPa = 10 N/cm² (the above dimensions and types are not binding)

Our product range consists of the following components and devices:

- Linear vibrators
- Turbine vibrators
- Ball vibrators
- Roller vibrators
- Vibrating tables
- Vibrating troughs
- Vibrosieves
- Bowl feeders
- Vibrating mixers
- Bunker hammers
- Hydrovibrators
- Vertical vibrating conveyors